



Semi-detached family home, two-story, with 2 beds, centrally located in the small fisher-village

Arrieta 225.000€ / £194,000 Ref: 2265

🏠 Semi-detached Duplex
🛏️ 2 Bedrooms
🚿 1 Bathroom
🚽 1 WC

Floor area: 72m²

Semi-detached Duplex, built in 2001, at the entrance of Arrieta, over 72sqm, centrally located in quiet zone and good conditions.

The entrance area is accessed via the street, on the ground floor consists of an open living-dining area, a separate fully equipped kitchen and a toilet under the staircase.

On the upper floor has two bedrooms with build in wardrobes and a bathroom with shower/bathtub.

A small good, maintained garden with a variety of plants surrounds the property.

LOCATION OF THE PROPERTY: Conveniently located in Arrieta, it is within walking distance of shops, restaurants, bus, beach etc. Arrieta is a small quiet former fishing village known for its seafood restaurants directly on the sea.

🚗 *Parking:* None

🌳 *External:* Garden

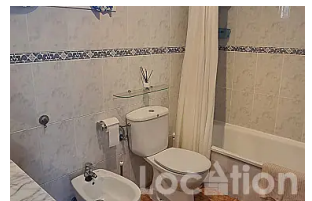
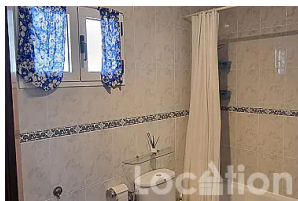
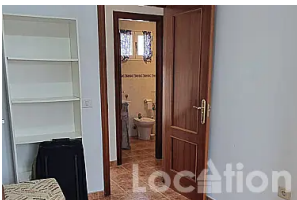
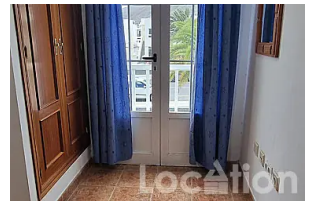
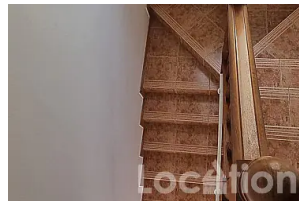
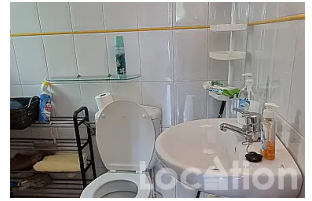
🏊 *Pool:* None

👁️ *Outlook:* city view

🛋️ *Furniture:* part furnished

🛗 *Lift:* None

Bin collection: 39€ p/a / £30



Ref: 2265

<https://en.location-lanzarote.com/2265>

Updated 19/03/26

© Location Properties S.L.

Phone: +34 928 827 257

Email: info@location-lanzarote.com