



Corner house, two-story, with 2 beds, centrally located in the small fisher-village

Arrieta 295.000€ / £254,000 Ref: 2243

🏠 Corner Duplex 🛏 2 Bedrooms 🚿 1 Bathroom 🚽 1 WC

Floor area: 79m²

Corner Duplex, built in 2001, at the entrance of Arrieta, over 79sqm, centrally located in quiet zone and good conditions.

The entrance area is accessed via the street, on the ground floor consists of an open living-dining area, a separate fully equipped kitchen and a toilet under the staircase.

On the upper floor has two bedrooms, one with a balcony and a bathroom with shower/bathtub.

A small garden with some plants surrounds the property.

LOCATION OF THE PROPERTY: Conveniently located in Arrieta, it is within walking distance of shops, restaurants, bus, beach etc. Arrieta is a small quiet former fishing village known for its seafood restaurants directly on the sea

🚗 **Parking:** None

🌳 **External:** Garden

🏊 **Pool:** None

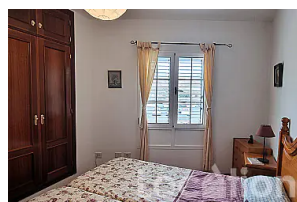
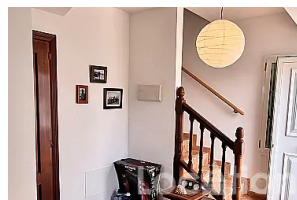
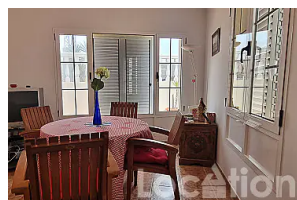
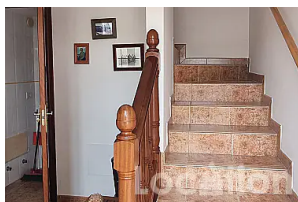
🏞 **Outlook:** garden view

🛋 **Furniture:** fully furnished

🛗 **Lift:** None

Rates: 250€ p/a / £220

Bin collection: 50€ p/a / £40



Ref: 2243

<https://en.location-lanzarote.com/2243>

Updated 16/07/25

© Location Properties S.L.

Phone: +34 928 827 257

Email: info@location-lanzarote.com